



CENTRON

AccuMix[™] **CM760**

DATA COLLECTION MIXER

Centron

Smart Solutions for Smarter Bloodbanking



Redefining the standards

AccuMix[™] CM760

DATA COLLECTION MIXER

Features

- Accurate weighing and mixing of collected blood
- 5-inch LCD screen with user-friendly interface
- Visual/audible alarms with voice guide
- Multi-functional remote control unit
- Dual barcode scanner system
- Wireless data transfer (CDM software)
- Emergency onboard battery
- Large capacity battery pack for portable use
- *SureSeal*[™] tube sealer integration ready
- Secured stackable storage - Carrying Case Pro
- Versatile configuration

Multi-functional remote control unit

- shows % indication of collection progress
- Main panel buttons are located
- Easy access, no more hunching up the back

Dual barcode scanner system

- recognizes all standard barcode labels including ISBT128 (Customization available)
- Secondary scanner at the front of unit

Sealing hand unit

- *SureSeal™* tube sealer module can be integrated

5-inch large LCD

- Clear backlit screen
- User-friendly graphic interface

State-of-the-art technology

- Precise weighing and mixing accuracy
- Customizable operational parameters
- Ergonomic design

Standard large tray

- supports all types of bloodbag in the market
- Easy to clean, easy to handle

Sample tube holders

- hold up to 6 sample tubes

Carrying Case Pro

- Robust stackable case
- Batteries can be recharged with the case closed
- "Carry & Set up" as collection stand

Emergency onboard battery

- guarantees completing ongoing collection for 30 more minutes in case of abrupt AC failure

Intelligent voice guide (Multiple languages)

- announces collection progress and alarms

Internal device memory

- saves up to 1,000 donor data, each consists of 30 information fields

USB memory stick

- Data can be moved via USB memory stick

Wireless data transfer (CDM Software)

- Simple / reliable / secured data communication with up to 18 devices by one CDM software installed on the PC
- General spreadsheet file format (.csv) & .txt for system integration
- Simultaneous setting change available for all devices in network

* shown in full configuration (CM760 Extended)

One for All, All for One

Multi-functional Remote Control Unit

- 10 LED lamps indicate % progress of collection and alarms. The lamps flash in case of alarming.
- Main operation buttons (CLAMP/START/END/ENTER) on the unit enhance user convenience.
- Secondary barcode scanner is equipped at the front.



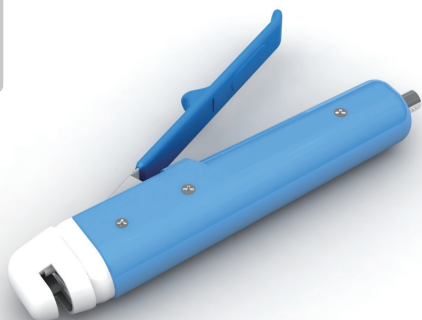
Dual Barcode Scanner System

- Barcode scanners read most of standard barcode labels including blood bank-specified ISBT128 code.
- Centron R&D Lab is ready for customized solutions.



SureSeal™ Tube Sealer Integration

- SureSeal™ tube sealer module can be installed in the main unit. By plugging in a sealing hand unit, CM760 is ready to offer the highest level of versatility.



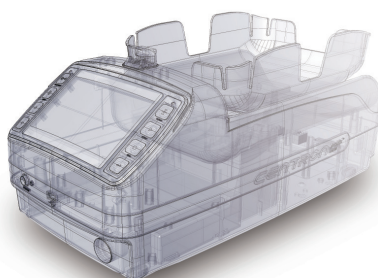
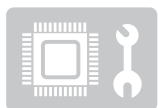
Dual Battery System

- Onboard battery (rechargeable) is for emergency backup. In case of unexpected AC power failure, it guarantees saving all donor data and supplies power for 30 more minutes to complete ongoing collection cycle. No need to use BN128 battery pack all the time in case of AC powered indoor uses.
- For portable or outdoor use, the large capacity BN128 battery pack (rechargeable & replaceable) is available. The pack supports up to 8 hours of operation without AC mains.
- BN128 battery pack is charged through the main unit or BC164 fast battery charger.



High User Customizability

- CM760 is designed to satisfy various operating conditions in professional demands. Users can adjust most operational setting including target collection volumes, alarm levels and on/off, tray moving speed and even specific gravity of blood.
- Centron R&D Lab offers customization support to meet your specific operation requirements.



Intelligent Voice Guide

- Voice guide system speaks real-time information including selected target volume, collection start, collection end and alarm conditions.
- 10 selectable languages:
 - English, Spanish, French, German, Portuguese, Italian, Russian, Chinese, Korean and Japanese



■ 5-inch LCD Screen

- Clear backlit LCD display helps users following instructions and monitoring data. Display contains all necessary information for user convenience.



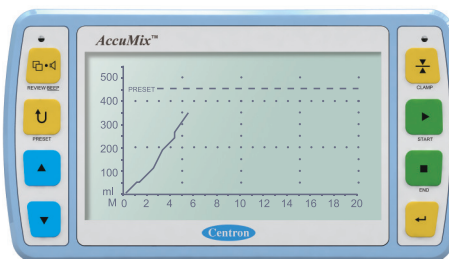
■ User-friendly Interface

- Collection processes are represented with graphic symbols.
- Users can change settings depending upon requirements with passwords.



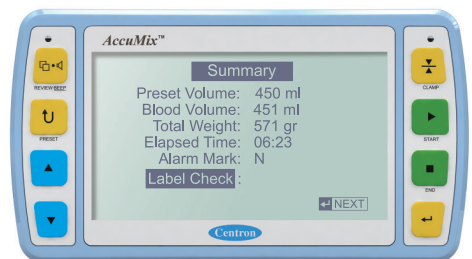
During Collection

- Collected blood volume
- Target blood volume
- Total weight
- Collection elapsed time
- Blood flow rate and alarm
- Collection progress bar



Collected volume curve

- presents collected blood volume vs elapsed time
- Curve slope gives a quick view of collection flow rate

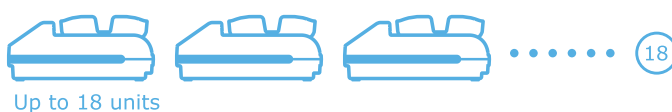


Data summary and review

- shows donor data summary at the end of collection cycle
- scrolls all data saved in the internal device memory

■ Smart Data Management System

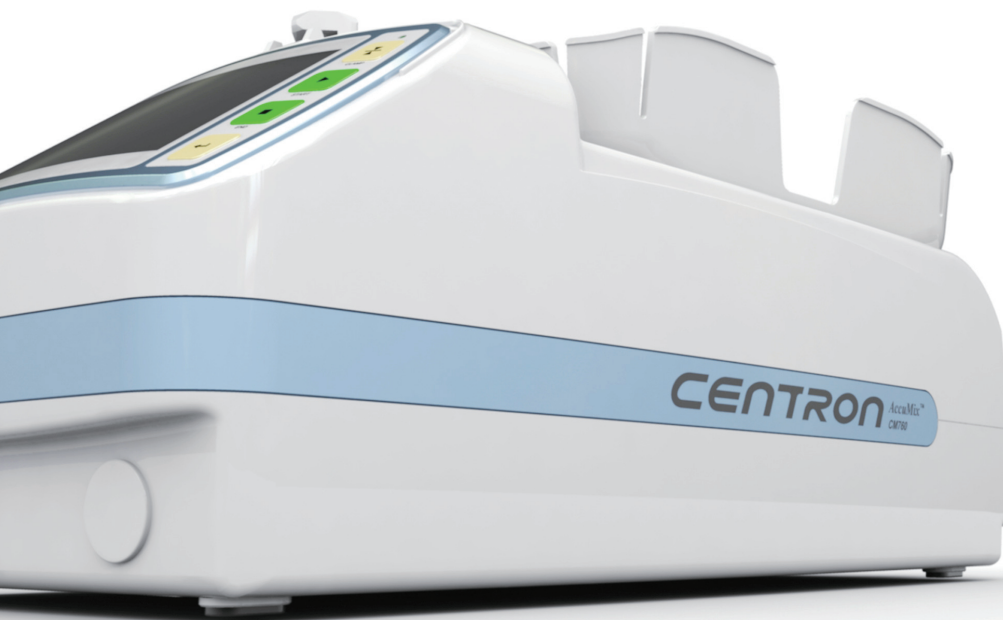
- All the collection data including up to 1,000 donor information are saved in the internal device memory of CM760 main unit. Each data consists of 30 information fields.
- Data can be transferred by a USB memory stick or via wireless data link (CDM).
- One CDM network can group 18 units. A supervisor can monitor and control real-time operation of up to 18 units. Donor data, collection data, alarm status, device settings are real-time managed by a computer.
- Data format is available in .txt (text file) and .csv (general spreadsheet file). Users can manage data with a spreadsheet program. Microsoft Excel® is recommended.
- Device settings in the network can be managed as all or separately.



Up to 18 units



No.	Serial No.	Device ID	Status	Preset	Collected	Progress	Time
1	[P0010001]	CM760CM01	Ready	450 ml	50 ml	11 %	01:23
2	[P0010002]	CM760CM02	Collecting	450 ml	250 ml	55 %	06:30
3	[P0010003]	CM760CM03	Low Flow	450 ml	230 ml	50 %	06:42
4	[P0010004]	CM760CM04	Collecting	450 ml	230 ml	50 %	06:42
5	[P0010005]	CM760CM05	Ready				
6	[P0010006]						
7	[P0010007]	CM760CM07	End	450 ml	450 ml	100 %	06:48
8	[P0010008]	CM760CM08	Ready				
9	[P0010009]	CM760CM09	High Flow	450 ml	300 ml	66 %	07:05
10	[P0010010]						
11	[P0010011]	CM760CM11	18 Pass	450 ml	450 ml	95 %	10:02
12	[P0010012]						
13							
14							
15							
16							
17							
18							



CENTRON

AccuMix™ CM760

DATA COLLECTION MIXER

Optional Chart

	Selective Item	Including	Note
Unit Configuration	• CM760 Basic	<ul style="list-style-type: none"> CM760 main unit AC power adapter User's manual 	<ul style="list-style-type: none"> Essential configuration for BASIC MODE operation ONLY BN128 battery pack is not included
	• CM760 Standard	<ul style="list-style-type: none"> CM760 Basic [Option D] included [Option C] included 	<ul style="list-style-type: none"> Standard configuration for DATA MODE operation BN128 battery pack is not included
	• CM760 Extended	<ul style="list-style-type: none"> CM760 Standard [Option S] included BN128 battery pack 	<ul style="list-style-type: none"> Complete configuration with tube sealing feature
Optional Package	• [Option D] DATA Management Package	<ul style="list-style-type: none"> Barcode scanner Multi-functional remote control unit USB memory stick 	<ul style="list-style-type: none"> Supports DATA MODE operation Either [Option C] or Pole Mounting Kit may be required to hang a barcode scanner, multi-functional remote control unit and sealing hand unit
	• [Option C] Carrying Case Package	<ul style="list-style-type: none"> Carrying Case Pro (including device mounting platform, pole, hanger & thumb screw, plug extension adapter) 	<ul style="list-style-type: none"> Stackable and secured storage Easy transportation of all parts Main unit charging available with the case closed It can be used as collection stand for main unit Pole and hanger are mounted on device mounting platform
	• [Option S] Tube Sealer Package	<ul style="list-style-type: none"> Built-in <i>SureSeal™</i> tube sealer module Sealing hand unit & 1.8m(6ft) cable 	<ul style="list-style-type: none"> Built-in <i>SureSeal™</i> tube sealer module (SEM 01) BN128 battery pack must be installed
Supporting Device	• Collection Data Manager (CDM)	<ul style="list-style-type: none"> CDM module Antenna & USB cable Installation CD 	<ul style="list-style-type: none"> Wireless Modem with CDM software package Real-time collection site monitoring for up to 18 units Wireless data transferring to a computer Simultaneous device setting for a group of 18 units
	• BC164 Fast Battery Charger		<ul style="list-style-type: none"> AC powered fast multi-battery charger Charging of 6 BN128 battery packs

※ Optional parts including BN128 battery pack may be sold separately. For more information about package customization, please visit our website.

Specification

Product	Data Collection Mixer
Model	CM760
Power	18V \sim 1.67A + \rightarrow -
Adapter	100-240V \sim 50/60Hz 1.5A
Dimension	Main Unit: 200(W)mm/400(L)mm/176(H)mm
	Carrying Case: 280(W)mm/450(L)mm/380(H)mm

Information



DISTRIBUTOR

Centron Centron Corporation

Address: 44 Beolmal-ro, Dongan-gu, Anyang, Gyeonggi-do,
Postal Code 14059 / Republic of Korea
Phone: +82-31-422-7890 / **Fax:** +82-31-422-7866
E-mail: info@centrons.com
Website: www.centrons.com



※ The specification and design are subject to change without prior notice for product upgrades.